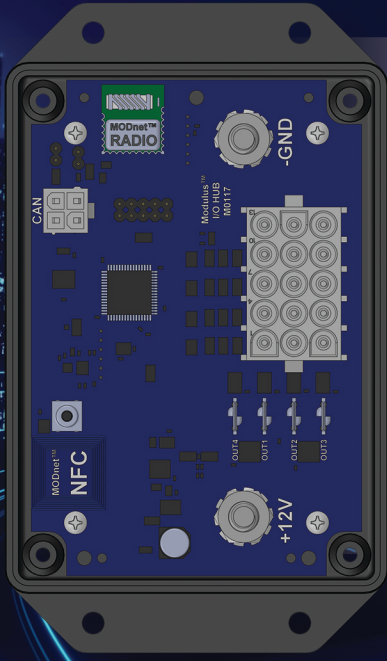




MODULUS™

UNIVERSAL I/O SYSTEM



MODULUS I/O HUB

19 CONFIGURABLE INPUTS AND OUTPUTS

Modulus I/O Hub provides 15 Analog or Digital Input lines, with 4 Configurable 7.5A Outputs.

Using the MODnet communication protocol, your devices can be controlled from nearly any source, wired or wireless.

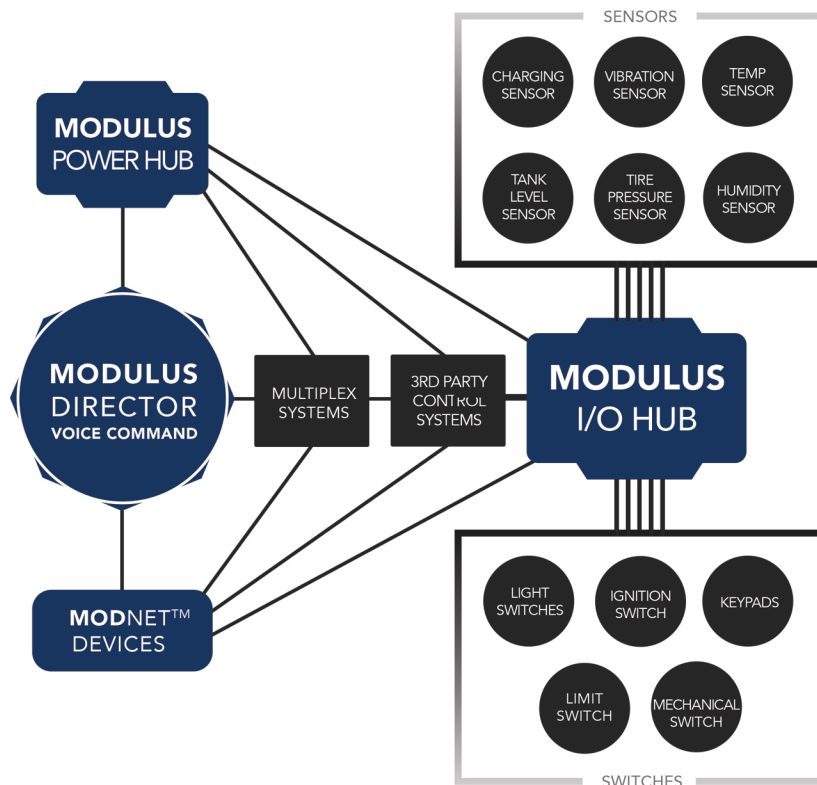
MODnet can operate standalone or with your existing systems.

I/O HUB FEATURES

- 15 Digital and Analog Inputs
- 4 Outputs (Up to 7.5A)
- eFused and Automotive Protected
- Control & Config options via MODnet: CAN (RV-C or NMEA2000), LIN, Bluetooth, or SafeRF
- Built Tilt and Movement sensor
- Console & Expansion Header: I2C, UART, Digital I/O
- Fully Automotive Protected
- Hardware and Software security capable
- NFC/CAN configuration
- RGB LED for status and mode indication
- Low power sleep mode
- Compact Size: 5.5" x 3.25" x 1.5"



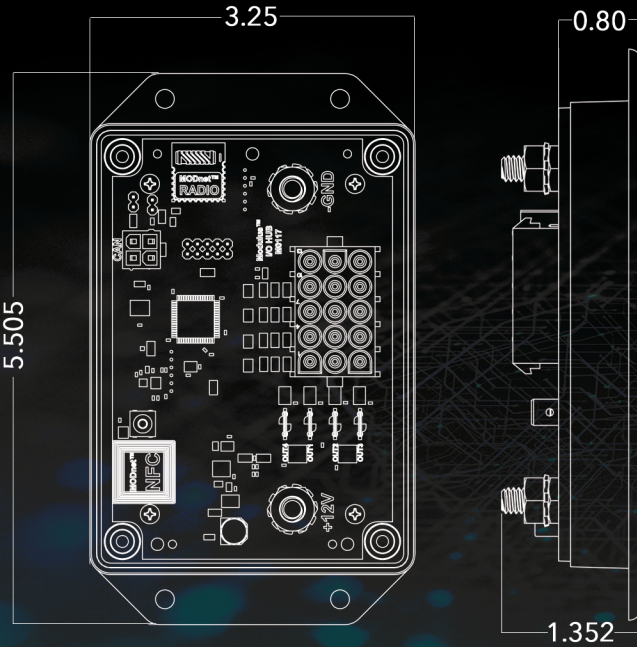
MODNET™ Can operate standalone or with your existing systems.





MODULUS™

THE MODULUS I/O HUB



TECH SPECS

- 15 ANALOG/DIGITAL INPUTS
- 4 DISCRETE HIGH SIDE OUTPUTS (7.5A) VIA TABS (30A MAX PER BOARD)
- OPTIONAL LINE 1-4 I/O CONVERSION TO USE SINGLE UNIVERSAL MATE-N-LOK
- ACCELEROMETER AND INCLINOMETER ONBOARD
- EFUSEING WITH PROGRAMMABLE OVER/UNDERCURRENT WARNING & DISCONNECT
- AUTOMOTIVE PROTECTION - REVERSE POLARITY, LOAD DUMP, FIELD DECAY, INDUCTIVE COUPLING



CONSOLE & EXPANSION

- 1: 3.3V (10MA)
- 2: 12V (50MA)
- 3: DIGITAL I/O (1MA)
- 4: UART RX
- 5: DIGITAL I/O (1MA)
- 6: UART TX
- 7: DIGITAL I/O (1MA)
- 8: I2C CLOCK
- 9: GND
- 10: I2C DATA

SPECIFICATIONS

GENERAL & ENVIRONMENTAL

Rating	Minimum	Typical	Maximum	Units
Operating temperature	-20		60	C
Storage temperature	-40		85	C
Over temperature cut-off temperature		100		C
Weight		3		Oz
Size		3.5x5.5		Inches

ELECTRICAL

Ratings at 25C	Minimum	Typical	Maximum	Units
DC voltage	6.0	12.5	17	Volts DC
DC low voltage disconnect (5 minutes) {Configurable}		10.5		Volts
Low Voltage Reconnect Hysteresis		250		mVolts
DC Load amperage (continuous)		7.5		Amps
DC Load amperage (15S)		8		Amps
DC Load overcurrent disconnect (2S)		10		Amps
Total Board Current (continuous)		30		Amps
Total Board Current (15S)			48	Amps
DC current Sleep (wake on event)		500		uAmp
DC current Operating (full speed, with Tx or Rx)			50	mAmp



MODnet™ is a robust communication protocol that can handle simultaneous wired or wireless connections. It can be used to handle and translate messages from Bluetooth®, CAN (RV-C and NMEA2000), or LIN. We also offer a secure & encrypted wireless radio system with SafeRF™.

CONTACT

RELATED PRODUCTS



MODULUS DIRECTOR VOICE COMMAND

Want to control your system with no more than your voice? The Modulus Power Hub can be used standalone or with a Modulus Director Voice Command to control up to 15 devices. No internet required.



CHASE HEALEY
574.361.1411
healeyc@atcomp.com



modulustechnologies.com

MODULUS AND MODNET PROVIDED BY AMERICAN TECHNOLOGY COMPONENTS INC.

